

# DeskPack

## Module Descriptions

*DeskPack turns Adobe® Illustrator® and Photoshop® into full-fledged packaging applications.*

*Using EskoArtwork's pre-production knowledge, you can now boost productivity and reduce errors while working in your favorite design application.*

*A set of modules that fits any prepress environment. From importing structural design files (CAD data) all the way up to creating repetitions of print-ready production files, DeskPack offers the best solution to get the job done.*

## Index

### Tools for Adobe® Illustrator®

• ArtiosCAD Export plug-in for Adobe Illustrator .....	2
• ArtiosCAD Import plug-in for Adobe Illustrator .....	3
• boostX .....	4
• Channel Mapping .....	6
• Dynamic barcodes .....	7
• Dynamic panels .....	8
• Image Extractor .....	9
• Instant Trapper .....	10
• Outright .....	11
• PowerLayout for Labels .....	12
• PowerTrapper .....	13
• Preflight for Illustrator .....	14
• Seamless Repeat .....	16
• Screening for Illustrator .....	18
• Viewer for Illustrator .....	20

### Tools for Adobe® Photoshop®

• Flexo tools for Adobe® Photoshop® .....	22
• Ink tools for Adobe® Photoshop® .....	25

# ArtiosCAD export plug-in for Adobe® Illustrator®

## Export contours from Adobe® Illustrator® to native ArtiosCAD ARD workspace format

*ArtiosCAD is the industry's most popular computer-aided packaging design (CAD) software. ArtiosCAD provides structural designers with a tool for conceptual design, product development and "live" prototypes. Until now CAD files could only be exchanged in file formats such as DXF, EPS, CFF2. Structural intelligence such as folding, animation, material, etc. was lost.*

The ArtiosCAD export plug-in allows users to write ArtiosCAD files or to paste Adobe® Illustrator® objects directly into ArtiosCAD, including their line type properties. These line type properties can be assigned in Adobe® Illustrator® by using the ArtiosCAD line type swatch library.

The ArtiosCAD export plug-in is available for both Mac and PC.



As a designer or creative professional you might need to access different die, crease or bleed information of an ArtiosCAD file and utilize it for the alignments of graphic objects or as clipping paths. With ArtiosCAD Export you can convert ArtiosCAD line types to Adobe® Illustrator® contours. With this plug-in you can establish a link to any native ArtiosCAD file and turn the bleed information into a dynamic varnish blanket.

The ArtiosCAD export plug-in is available for both Mac and PC and can be downloaded at:

[www.esko.com/download](http://www.esko.com/download)

# ArtiosCAD import plug-in for Adobe® Illustrator®

## Open native ArtiosCAD files in Adobe® Illustrator®

*EskoArtwork ArtiosCAD is the industry's most popular computer-aided packaging design (CAD) software. ArtiosCAD provides structural designers with a tool for conceptual design, product development and "live" prototypes. Until now CAD files could only be exchanged in file formats such as DXF, EPS, CFF2. Structural intelligence such as folding, animation, material, etc. was lost.*

With the ArtiosCAD plug-in for Adobe® Illustrator® you can now open or place native ArtiosCAD files into Adobe® Illustrator® without any file conversion.

The plug-in allows Adobe® Illustrator® operators to view the structural design and integrate it into the graphic design.

- **Alignment tool:** allows to snap the CAD objects and lines to the graphical elements.
- **Locked CAD layer:** prevents changing the CAD file with standard Adobe® Illustrator® editing tools.
- **Dynamic Linking:** automatic updates of CAD layer when the original CAD file is edited.
- **CAD line styles translator:** the different CAD line styles are translated to custom colors.

The ArtiosCAD import plug-in is available for both Mac and PC and can be downloaded at:

**[www.esko.com/download](http://www.esko.com/download)**

# boostX

## Powerful editing tools on the desktop

*EskoArtwork's DeskPack boostX offers a collection of Adobe® Illustrator® plug-ins to improve packaging design productivity. It is a portfolio of dedicated tools to accelerate frequently used selection and alignment operations, and to add new ways to handle spot colors and special inks beyond Adobe® Illustrator's® powerful capabilities.*

## Proven tools to enhance artwork, while making designers more productive

DeskPack boostX provides a set of tools that enhance the design features of Adobe® Illustrator®. Tools to improve productivity include:

- **InkManager:** Define your Ink properties (varnish, opaque, technical, ...), screen ruling and angles including the required dotshape.
- **Area select:** A faster and more efficient way to select objects, especially in a complex design. Drag a selection marquee around the object(s) you wish to select. A keyboard modifier can help to put the selection marquee under any angle.
- **Select small objects:** Scanned and vectorized artwork often contains small, unwanted objects caused by dust and scratches on the original. Drag a selection marquee around one of these small objects. All other objects of the same or smaller size are automatically added to the selection, and can be removed by using the delete shortcut – an easy way to clean a scan.
- **Cross-hair:** Quickly and accurately place and arrange objects. Position and rotate the cross-hair manually or numerically, and align objects to it.



*The boostX Crosshair tool aligns the visual bounds of rotated objects in just one click.*

Other boostX tools help redraw artwork and build ink palettes for package designs:

- **Gradient tool:** Change the directional vector of the gradient without having to completely redraw it. The ramp points of the gradient can be displayed through a set of lines. Moving these lines accurately aligns the gradient ramp points to other design elements.
- **Ink list:** An overview of all inks used in the job. You can quickly select all objects that contain a specific ink. Convert spot colors to CMYK or to a different spot color. The ink conversion is automatically applied to all objects containing that ink, without selecting any object.
- **Ink mix:** Assign more than one spot color to one object. A mix of spot colors and process colors is possible – even in gradients.
- **Replace contour:** Easily clean up designs and scanned artwork by replacing parts of objects with a newly drawn section. This simple and straightforward 2-click operation removes the tedious process of accurate “cutting”, “abutting” and “joining”.
- **Ink merge/Ink split:** Merge a stack of objects into one single object, inserting a mixed color setting, if required, from the ink mix tool. Split objects with multiple inks into a stack of overprinting objects – each with a single process color or spot color.



*This gradient tool gives you full and precise color control by moving your color stops directly inside a gradient-filled object.*



*Get rid of any unwanted inks in no time and avoid wrong output by checking your separations beforehand.*



*Use the full amount of available inks when making your job colors instead of only mixing the 4 process inks.*

# Channel mapping

Remaps the channels of images that are either embedded or placed in Illustrator documents into any used ink in the document. Channel Mapping can remap the inks of all commonly used images formats (TIFF, JPEG, PSD, Photoshop DCS, Photoshop EPS, PNG, GIF...), and remap several images that have the same characteristics at once. Channel Mapping also allows to set images to overprint other objects in the document, or to use ink tints in each channel.



Attributes Channel Mapping X

Name: pizza.psd

Overprint

Inks	Map to	Tint
Process Cyan	⇄ Process Cyan	100
Process Magenta	⇄ Process Magenta	100
Process Yellow	⇄ Process Yellow	100
Process Black	⇄ Process Black	100
PANTONE 811 C	⇄ PANTONE 363 C	100

Apply Revert

# Dynamic barcodes

## DeskPack barcodes for Illustrator® (local license)

## Exceptional barcodes for Adobe® Illustrator® CS users

Esko, with a long-proven track record of design and prepress tools offers DeskPack barcodes for Illustrator®. It allows the creative professional to automatically generate barcodes, with checks and balances to assure the correct code is printed accurately.

## A complete range of barcodes

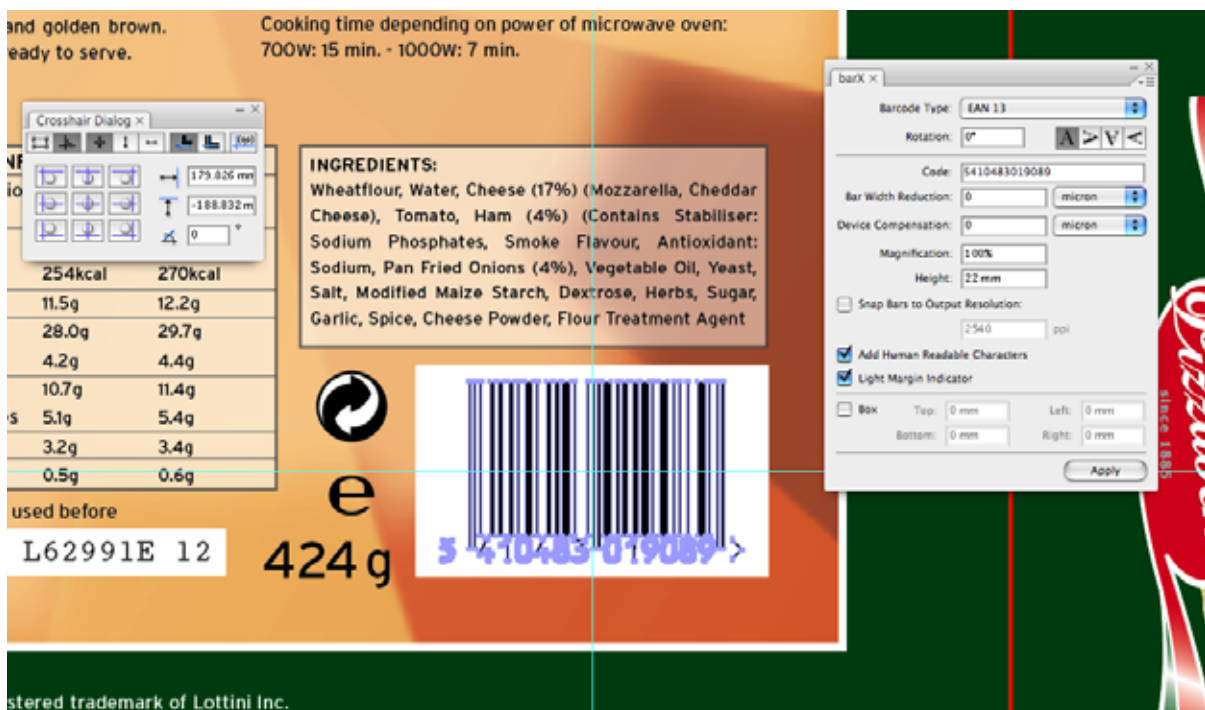
### Settings to assure accuracy and printability

DeskPack allows the greatest design freedom along with assured printability. Settings can include:

- Box size: Automatically create a box with the required light margin to fit behind a bar code.
- Bar width reduction: If ink will bleed during printing, barX can automatically compensate and reduces the bar width to compensate for any device or printing deviation.
- Magnification: Proportionately reduce or enlarge a bar code at drawing time taking the final output resolution into account, avoiding rounding errors that can affect the accuracy and readability of the bar code.
- Height: Easily adjust the height of the bar code, covering the height of bars.
- Output resolution: The exact output resolution of the exposing device can be defined to avoid rounding errors that can affect the accuracy and readability of the bar code.

### Compatibility

- Runs on Mac and on PC
- Supports Adobe Illustrator CS3, CS4 and CS5

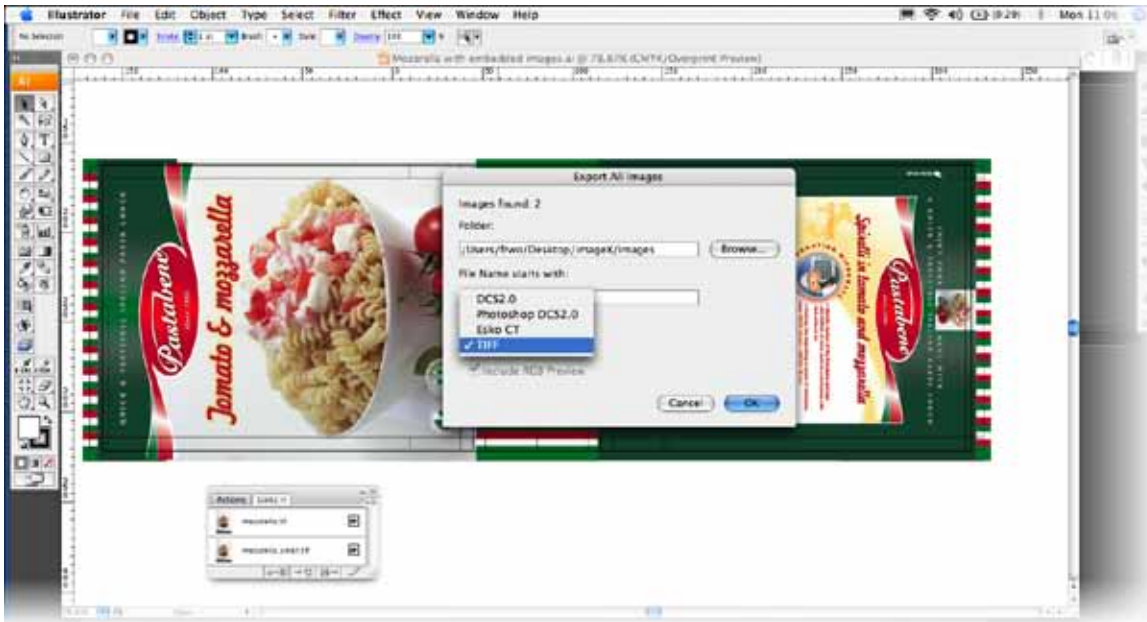




# Image Extractor

## Translate embedded images to separate, externally linked images

Adobe® Illustrator® files can be created and transferred with embedded images. After receiving such files, image editing is not possible, because the image is not available as separate components. The Image Extractor plug-in allows the operator to select such images, writing them to disk with an automatic feature that re-link them into the Adobe® Illustrator® file. Thus, images are available separately and can be edited with, for example, Adobe® Photoshop®.



Embedded images can be selected, written to disk, and automatically transformed from embedded images to linked images.

## Supported input formats

The Image Extractor supports the following embedded image modes:

- Monochrome images
- Bitmap images
- Composite CMYK
- Pre-separated spot color images. imageX will export these as composite multi-channel spot color images
- Adobe Illustrator

## Supported output formats

Depending on the input format, imageX can export to the following output file formats:

- DCS2.0, Photoshop DCS2.0, Esko CT or Tiff.

## Benefits

- Make embedded images data accessible for manipulation e.g. with Adobe® Photoshop®
- Share and control equal image data between documents
- Reduce turnaround time by reducing the file sizes easy-to-use

# Instant Trapper

## DeskPack Instant Trapper (local license)

- Instant Trapper is a real time and smart interactive trapping tool for Adobe® Illustrator® to produce high quality and predictable trapping.
- Generating the right trap is very dependent on the situation. Various conditions such as complexity of the artwork, special requirements or shared printing plates/cylinders prevent the usage of an automatic trapping solution.
- In a very intuitive and easy way Instant Trapper allows the Pre-press professionals to judge and trap color scenarios independently and therefore offers a new level of flexibility. Because all trapping happens on an additional layer, the integrity and structure of the artwork remains untouched.
- Instant Trapper allows the flexible and efficient combination of human competences and reliable, high quality object generation inside your favorite graphic application.



## Features

- Because Instant Trapper creates traps in a separate layer, trapping with Instant Trapper is a non destructive process.
- Instant Trapper is based on EskoArtwork's trapping core technology
- Instant Trapper is very intuitive and easy to use
- Trap object are generated in real time and can be modified with any of the Adobe Illustrator tools.
- Trapped files can be exchanged with any standard version of Adobe Illustrator
- Instant Trapper can trap all vector art, vignettes, images, text and even placed objects.

## Did you know?

- The mis-registration feature of Viewer for Illustrator® allows instant verification of the applied trapping. This soft-proof function reduces errors and waste during traditional interactive trapping
- Instant Trapper is complementary with EskoArtwork automatic trapping solutions such as trapX. This allows the combination of both tools.
- Finetune jobs after pre-trapping with trapX or PowerTrapper
- Compatibility
- Runs on Mac and on PC
- Supports Adobe Illustrator CS3, CS4 and CS5

# OutRight®

## A perfect match between proof, film or plate

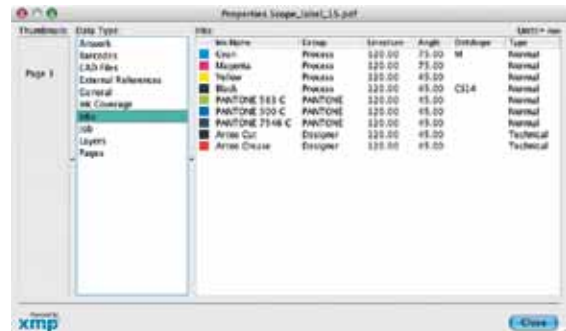
EskoArtwork's OutRight® and is now available with Adobe® Illustrator® and guarantees a perfect match between proof, film or plate, no matter what PDF level or PostScript RIP or imaging device is used.

OutRight ensures that transparencies, overprints, traps, vignettes, ... are rendered correctly (also when they include special inks). This new capability, unique in PDF and PostScript environments, specifically simplifies accurate proofing of complex multi-ink designs on standard four color PostScript proofing devices.

## Powered by XMP



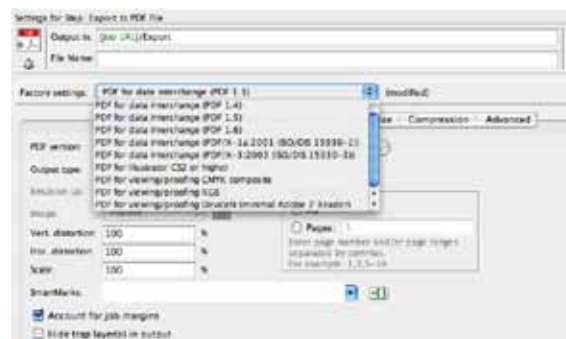
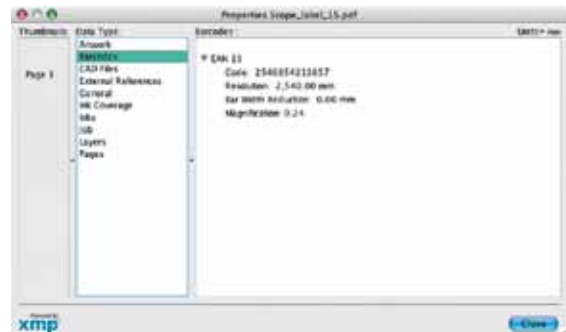
Adobe PDF documents created in Acrobat 5.0 or later contain document metadata in XML format. The Extensible Metadata Platform (XMP) provides Adobe applications with a common XML framework that standardizes the creation, processing, and interchange of document metadata across workflows. The metadata contains information such as the used CAD file, Ink coverage, barcode settings.



## Features and benefits

The combination of stepX with OutRight® gives you multiple advantages:

- Powered by XMP
- PDF 1.3, PDF 1.4, PDF 1.6, composite or separated PDF for Adobe® Illustrator® in any color space, including support for DCS spot color images
- PDF X-1a and PDF X-3a
- EPS/DCS file creation
- PostScript 1-2-3 output, composite or separated Object output retains full job editability (is not converted to bitmap)
- Correct rendering of job objects and attributes (transparency, traps, overprints, ink mixes)
- Enables color accurate proofing of jobs with arbitrary inks on 4/6/8 color inkjet proofers
- Results match through any standard PostScript RIP on any proofer, film or platesetter
- OPI support for Helios and Xinet FullPress® We support the following image formats:
  - EPS/DCS (including spot colors)
  - PSD (including spot colors and transparencies)
  - TIFF (including spot colors)
  - Esko-Graphics CT (including spot colors and transparencies)



# PowerLayout for labels

## Intuitive plate layout for Adobe® Illustrator®

*PowerLayout is a powerful tool for the creation of print-ready layouts. PowerLayout provides a robust set of automatic and interactive tools to create step-and-repeat arrangements for single jobs or multiple jobs.*

*It gives label printers the possibility to take control and reduce costs by bringing optimum plate layout in-house, inside their favorite desktop application Adobe® Illustrator®.*

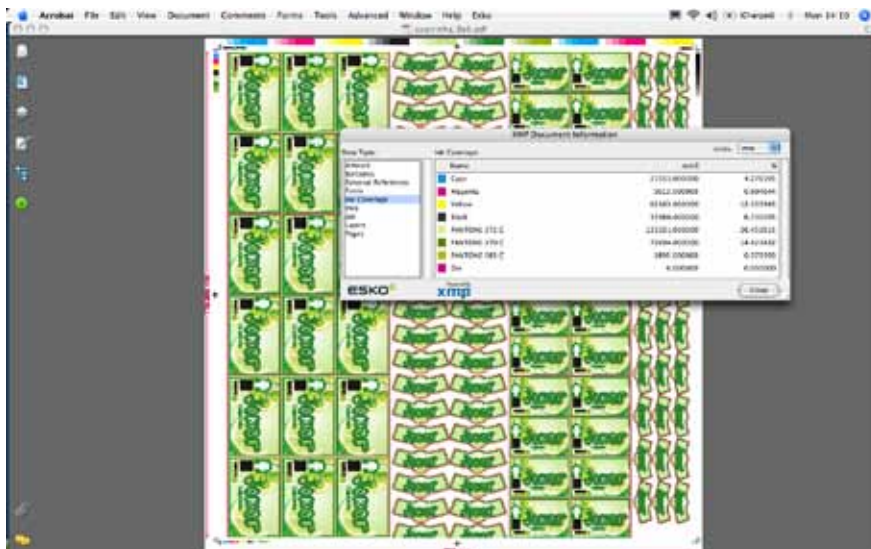
## Magical SmartMarks™

PowerLayout SmartMarks™ create marks that “automagically” adjust to the status of the job. SmartMarks™ adapt to changes to the sheet or board size, the plate size and number of inks in the job, and automatically create printing production controls like color bars, sheet corner marks, center marks, and trim marks. Because SmartMarks adjust to changes in the job, new plate designs for line extensions or last minute graphic changes are fast and easy with stepX. Your most used step and repeat schemes can be saved and re-used as templates.

## PowerLayout and OutRight

The combination of PowerLayout with OutRight® gives you multiple advantages:

- PowerLayout allows you to create a plate design in any flavor of PDF format, including PDF for Adobe® Illustrator® 9 or higher. The size of your step-and-repeat file is optimized since it contains only one instance of the original job. The strong PDF Form concept is used to execute the step-and-repeat of the job.
- Powered by XMP giving you access to metadata.



Powered By  
**xmp**™

# PowerTrapper

## Professional quality trapping for Adobe® Illustrator®

No printer can assure a job will be printed well without sufficient trapping. DeskPack PowerTrapper, an Adobe® Illustrator® plug-in, is based on the EskoArtwork's trapping technology, considered one of the best in the industry. Backed by more than twenty years of trapping experience, PowerTrapper is ready to handle any packaging design challenge. It is available as a Client version and as a Standalone version. With DeskPack PowerTrapper standalone, trapping is done without ever leaving Adobe® Illustrator®. And, while the PowerTrapper Client is trapping a design in the background with blazing speed, Adobe® Illustrator® is immediately available to start preparing the next job.



## Full trapping within a separate trapping layer

With PowerTrapper, an operator can trap objects, editable text, special fills, transparency, gradients, and process and spot color images together to assure a perfect job, independent of how it is printed. A full set of highly interactive trapping tools covers all contingencies, with support for technical inks, special inks, varnish areas – everything needed to complete a packaging design for print.

PowerTrapper is luminance-based vector trapping software, in which all traps are placed on a separate trapping layer with editable trapping objects – on top of the original design within Adobe® Illustrator®. This is “non-destructive” trapping, because it does not destroy the original artwork. Thus, traps can be viewed and modified – or even deleted – without fear of affecting the integrity of the original.

## Unique features such as central storage of trapping profiles

PowerTrapper is operated with access to centrally available trapping profiles. The ticket editor creates new, additional trapping profiles for specific customers or specific job types. All operators share all trapping tickets, guaranteeing consistently high-quality trapping, anytime, anywhere, by anyone.

With other trapping applications exception areas are often corrected after trapping, leading to extra, unproductive editing time. But, with PowerTrapper, exceptional situations can be anticipated by defining trapping rules within the trapping profiles. This unique concept eliminates further operator intervention.



# Preflight for Illustrator®

## Secure design validation

### Interactive preflight tools for Adobe® Illustrator® users

*Preflighting files to prepare them for printing is a complex chore. Even if a designer has extensive printing knowledge, it is difficult to know the printer's job requirements. With this plug-in, the creative professional can preflight Adobe® Illustrator® design files before they are sent to the prepress house or printer – automatically and interactively.*

## Validate the design for print

Everyone tries to push responsibility for packaging design printability as far upstream as possible. Detecting errors in an early stage eliminates possible problems and reduces operator time; thus reducing costs and improving productivity.

The Preflight for Illustrator® allows to validate a design file in the application in which it was created.

The intuitive user interface offers maximum efficiency. Direct feedback is provided: Preflight alerts the user to any objects that don't comply with a printability profile. Changing the object's incorrect parameter value, as specified by Preflight, remedies the problem.

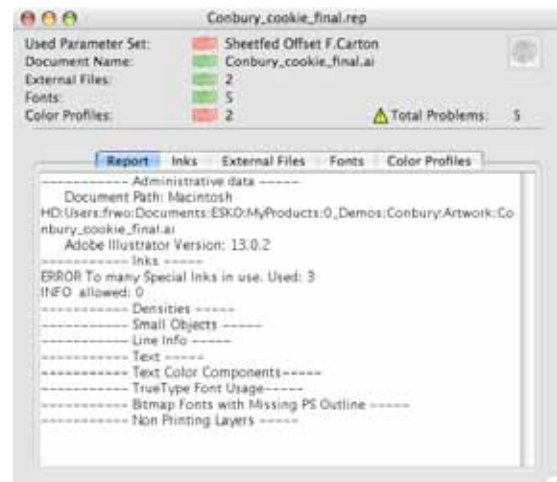


*Check your job against a predefined set of press parameters, and Preflight helps you clean it out interactively.*

With Preflight, a clean and printable design – including a Preflight validation report – is delivered, verified against the exact profile the prepress provider had sent. A match between digital signatures embedded in both the parameter file and report is the guarantee.

## Effective and easy to use Preflight features

- **Auto-collect all files for transmission:** The user can choose an output folder where Preflight bundles the design and all necessary files, such as images, fonts and ICC profiles.  
A Preflight report is added on the fly .
- **In-house checking:** By providing different profiles for each printing process – or each press – Preflight inspects files based on specific job requirements within Adobe® Illustrator®. Problems are resolved during the design phase, reducing time and costs.
- **Visual feedback:** When inspecting a design, Preflight records each error in an easy to view list. The user can easily access problem areas for immediate correction.
- **Report Viewer:** This standalone application reads Preflight or 'Preflight collect function' reports. Report Viewer also confirms that graphic items described in the report are unchanged and exist on the system.



*Preflight also provides an easy Collect for Output feature with report generation and digital signatures on every collected item.*

## Parameters for all facets of the job

Printing limitations vary between printing processes or even between presses. Preflight therefore registers these limitations as rules in a parameter settings file, which is the touchstone for the design inspection.

Preflight allows a number of parameters to be set for each profile, including:

- **Color:** Maximum allowed number of inks, spot colors and text color components; and a warning when RGB colors are used.
- **Image:** Image type, embedded images or RGB; minimum/maximum resolution of continuous tones and bitmaps.
- **Line:** Minimal width for white, single ink, and multiple ink lines.
- **Text:** Minimum text size for normal, serif, and bold text.
- **Dot percentage and Total Area Coverage:** Minimum and maximum dot percentages are checked as well as the areas that exceed a certain Total Area Coverage percentage.

# Seamless Repeat

## Seamless step and repeat for gravure or flexo cylinder workflows

Many specialty items, such as gift-wraps, wallpaper, plastic laminates, printed upholstery, imitation wood grain finishes, and vinyl flooring are created with rotogravure and flexography. These applications differ from magazine, catalog or packaging production because the graphics are typically printed in a repeating pattern. The graphics are usually repeated across and around the cylinder so that there is a continuous, seamless pattern produced as the cylinder rotates. Once the original repeating graphic is created, the graphic is stepped and repeated across a rectangular area - the size of the cylinder. Quite often, the graphic is placed at an angle and/or offset, to produce a more pleasing pattern.

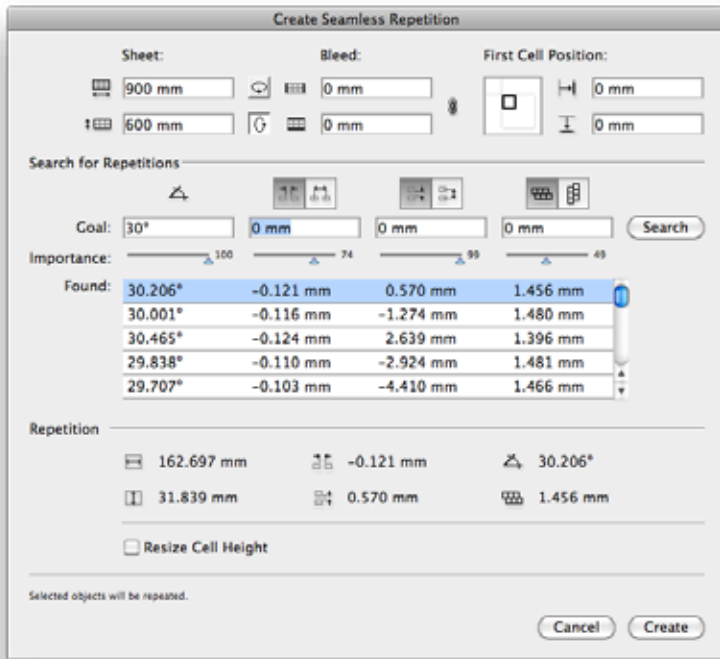
Developing these complex layouts with a trial-and-error approach is very time consuming and inefficient. A primary feature of seamless Repeat is the calculation of the correct spacing and repeat numbers to properly wrap the pattern around the cylinder, assuring seamless, continuous output.

Seamless Repeat will calculate the seamless step and repeat based on:

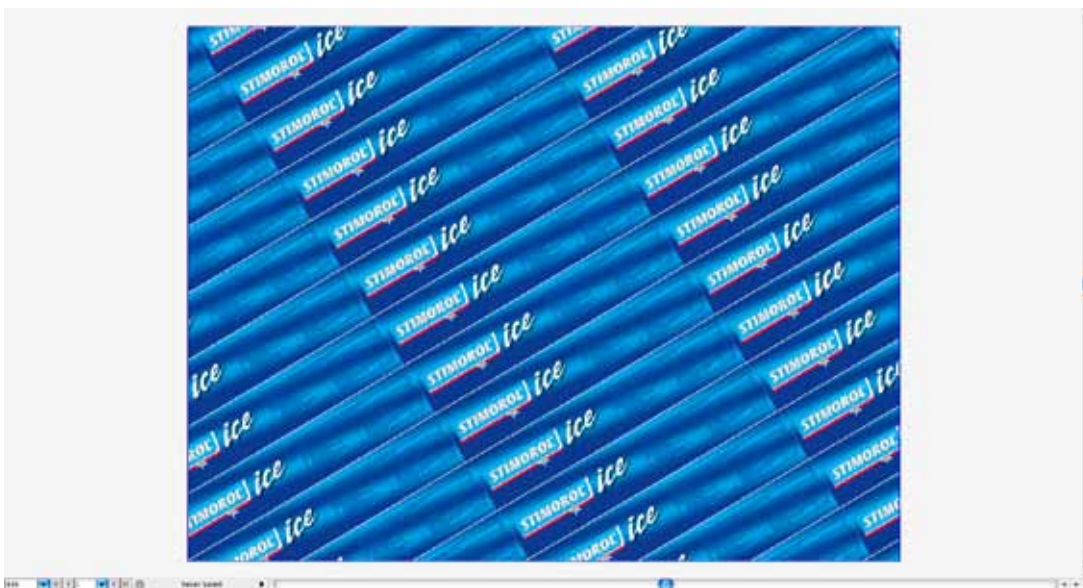
- Input graphics
- Cylinder size
- Options for desired spacing, angle and offset



Design element that needs to be repeated on a seamless cylinder. The trim box, highlighted in blue, acts as the step and repeat reference cell.



Based on cylinder size, logo angle, gap and stagger settings, seamless Repeat will calculate different step and repeat solutions.



Seamless Repeat will create a new document displaying the seamless step and repeat pattern.

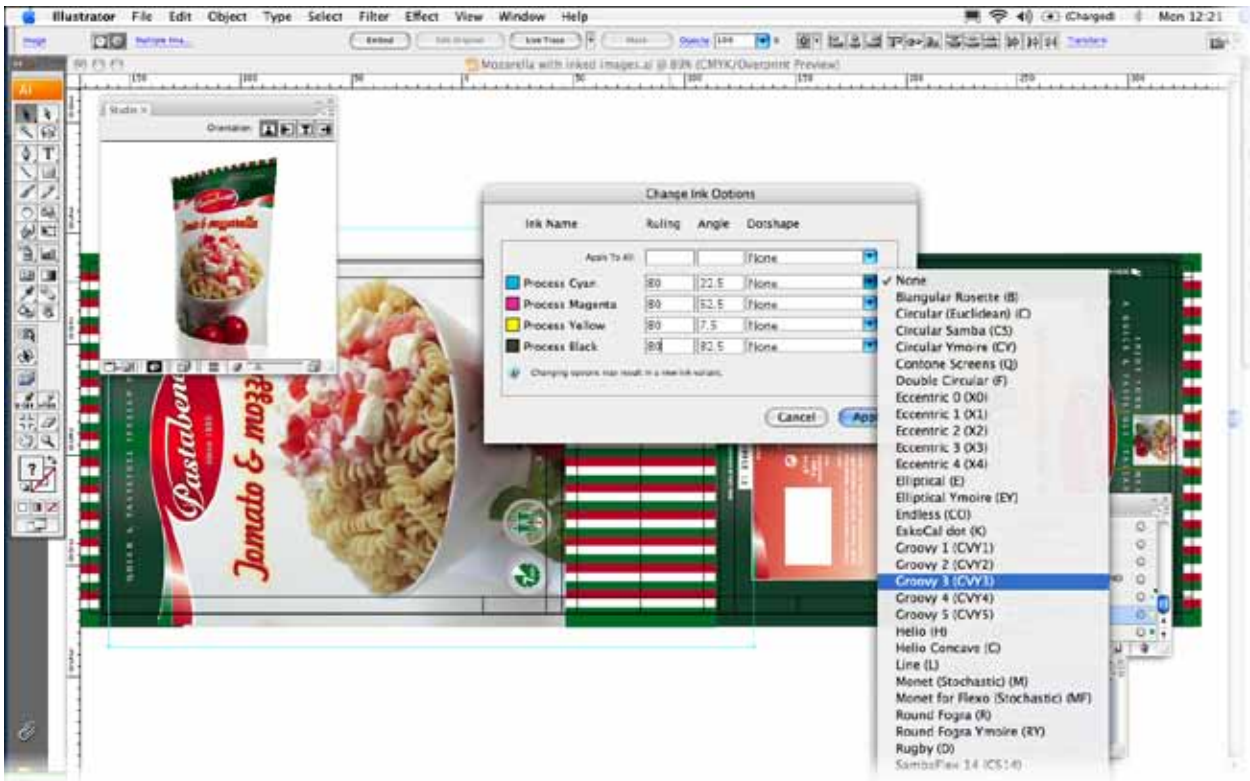
# Screening for Illustrator®

## Multiple ruling, angle and screening support within single separations

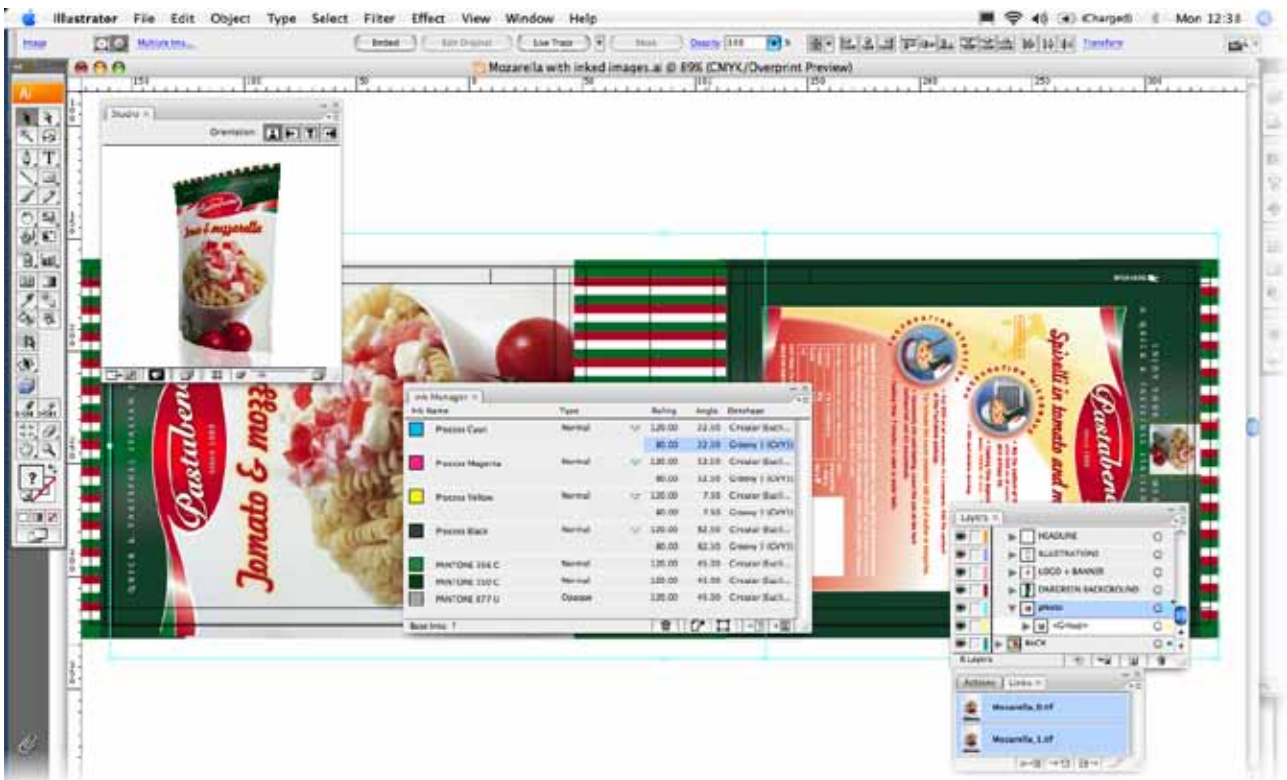
*The standard version of Adobe® Illustrator® can only provide one set of screen parameters (angle, ruling, dot shape) per ink/separation. The screening plug-in tool for Adobe Illustrator allows object-based components to have multiple rulings and/or multiple angles or screening technologies within a single separation. The use of these mixtures is quite common in packaging jobs. The screening plug-in can also be used as a tool to apply specific DGC (Dot Gain Compensation) settings, a utility supported by the EskoArtwork FlexRip and the Agfa Apogee workflow systems.*



*Example of a single separation containing multiple types of screening (circular, square and Monet).*



Object based ink property manager. Simply select an object and apply the settings through the Screening plug-in.



DeskPack's Ink Manager with an overview of the screening content of the Black separation.

# Viewer for Illustrator®

## View Inspect Measure

*Digital Quality Control tool and viewer for Adobe® Illustrator® design and production files, with accurate in-house soft proofs.*

This viewer plug-in for Illustrator® offers high resolution separation viewing, as if you were inspecting your final printing plates. Showing a process related preview. Viewer offers a Separation preview, TAC (Total Area Coverage) preview, Flexo Plate preview, Flexo Print preview and Registration Error preview. A digital densitometer gives instant and precise readouts of all inks in any area of the packaging design.

## Separation preview

- different viewing modes for individual or combined separations
- precise inspection tools with color correct preview
- high zoom factors – DeepZoom 150.000 percent in Illustrator®



## TAC preview

Anticipate run time printing problems: this viewer plug-in for Illustrator® will tell you the Total Area Coverage of a job and the minimum and maximum densities per ink. The Ink Coverage check settings are printing process aware. The TAC preview layer highlights the areas where the total area coverage exceeds a give limit.

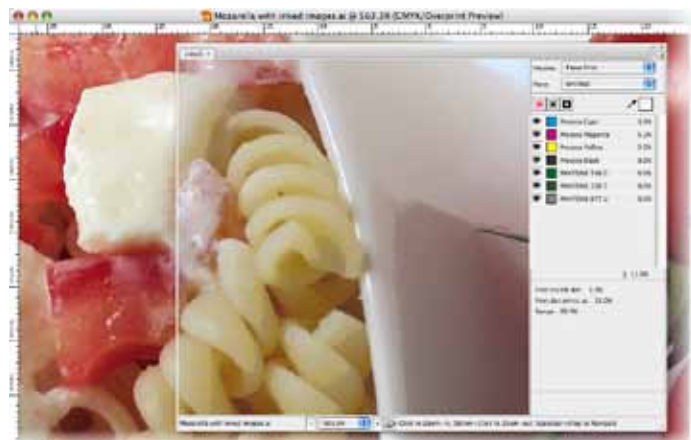
## Flexo Plate preview

The Flexo Plate preview layer displays a single channel of your image as a processed flexo plate.

## Flexo Print preview

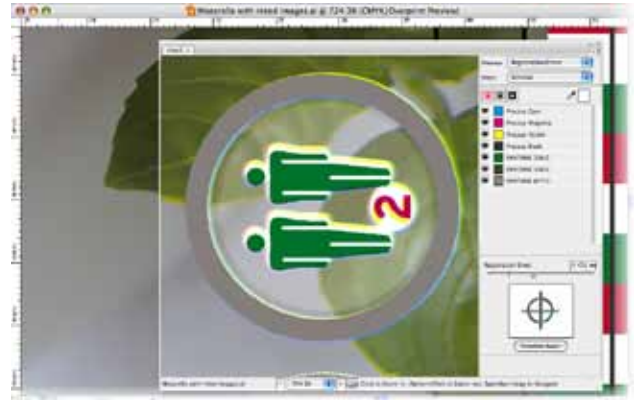
The Flexo Print preview can accurately predict:

- breaking out highlights
- disturbing edges in the black highlights
- isolated groups of pixels that can potentially print as scum dots
- general loss of dynamic range and print saturation



## Registration Error preview

The Registration Error preview simulates the press miss-registration per separation, allowing the operator to check for instance if the applied trapping distance covers the press miss-registration tolerance to avoid gaps.

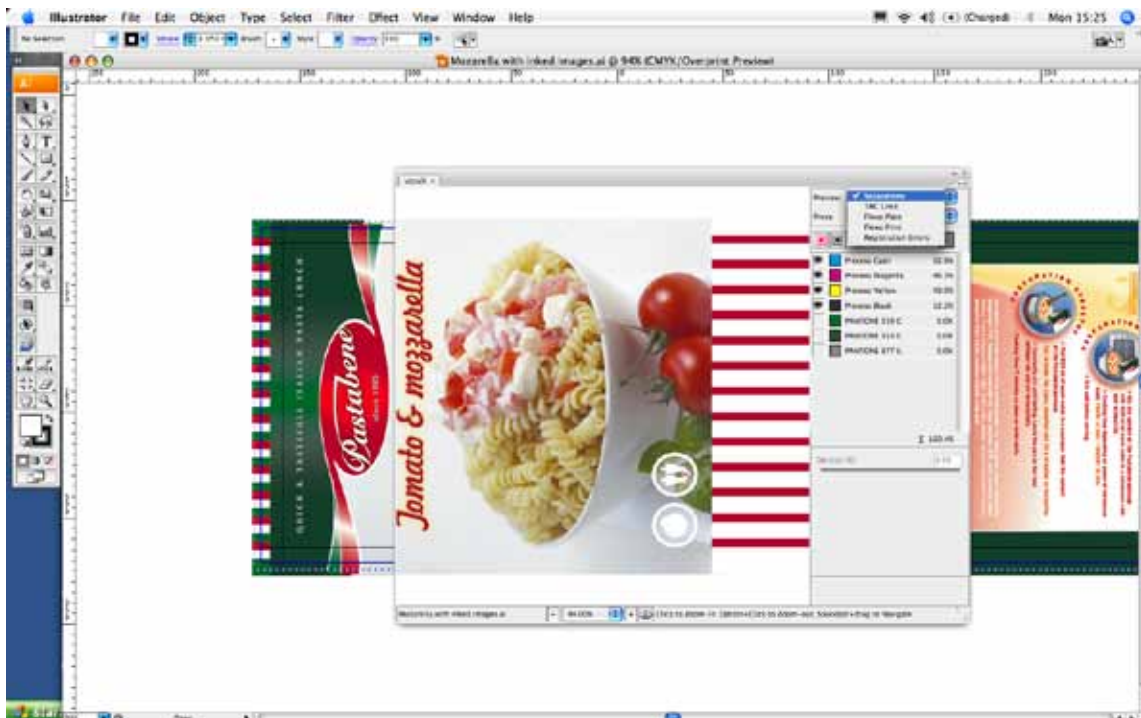


## Tickets

Viewer tickets are shared between Adobe® Illustrator® and Adobe® Photoshop®. Each operator in the plant can view and inspect jobs at any stage in the workflow. Viewer beats inspecting film on a light table, hands down. It saves time and cuts costs.

## Image viewing

Images are previewed based on the embedded or linked high resolution process or spot color linked images, even in an OPI environment.



Viewer in the Adobe Illustrator workflow. Boost file inspection efficiency in a user friendly way.

# Flexo tools for Adobe® Photoshop® (PC/Mac)

Printing images in a packaging workflow, more specifically a Flexo workflow, requires a high level of expertise from the trade shop or printer/converter. DeskPack for Adobe® Photoshop® brings that expertise now to your desktop, within your favorite retouching application.

DeskPack for Adobe® Photoshop® adds viewX for Flexo Print and Flexo Plate visualization, ink coverage visualization, etc. FlexoClean is included for efficient removal of scum dots.

The automatic FlexoFix image filter dramatically reduces retouching work while delivering results on the Flexo press closer to the target. Less skilled operators reach a new quality level, while even the most experienced retouchers appreciate that FlexoFix helps improving the quality and productivity of their work

## Viewer

DeskPack creates the viewX layers. When you toggle a viewX visible it changes the visual effect, showing the process related preview. ViewX is separated in TAC (Total Area Coverage) preview, Print preview and Plate preview.

The TAC preview layer highlights the areas where the total area coverage exceeds a give limit.

Print preview can accurately predict:

- Breaking out highlights
- Disturbing edges in the black highlights
- Isolated groups of pixels that can potentially print as scum dots
- General loss of dynamic range and print saturation

The Flexo plate preview layer displays a single channel of your image as a processed Flexo plate.



## An image-filter to prepare offset-images for flexography printing

Most images are separated, retouched and proofed for Offset. But what if the job is to be printed in Flexo? It needs to be retouched towards the Flexo printing process. Flexo processes struggle with the reproduction of low dot percentages. Following picture shows the tonal response of a well-handled Flexo print process.

*A simulated comparison between offset (left) and Flexo (right).*

## FlexoFix understands the problems and helps you out

The concept of FlexoFix is simple and differs fundamentally from curve or color management approaches: analyze the image from a flexography point of view and apply context-sensitive changes to the image.

## The 4 magic spells of FlexoFix

### Spell 1: Avoid highlight tonal jumps in the color channels (C, M and Y)

Tonal jumps occur where a transition is found between no dots and dots. All dots will have a minimum size, and this size prints quite dark as the result of the physical limitations of the Flexo process. Where dots are absent, you see the substrate color. The transition can therefore be very abrupt and hard-edged. The FlexoFix trick is to get rid of the transition by filling in the no-dot areas with dots.

### Spell 2: Avoid unwanted darkening

Plate making curves will typically bump up highlights and lower mid-tones more than mathematically required. This is done to preserve subtle highlight contrast. Many image areas however don't have any highlight contrast. In those image areas the bump-up curve is useless and renders a less faithful reproduction.

FlexoFix identifies the parts that will be needlessly darkened by the dot gain curves and correct for this. The other parts will just follow the bump-up behavior of the curves. The end result combines the best of both worlds: a guaranteed preservation of detail and colors that are closer to the target.

### Spell 3: Compensate for the loss of saturation

In composite colors, low percentages of a third color component (for example a small percentage of cyan in a red zone of an image) will print too dark. The resulting color will therefore be darker but in addition less saturated than intended. This makes Flexo printed images look dirty and dull.

In those cases, FlexoFix restores the original saturation by raising the percentages of the other two color components. For example: In a flesh-tone the magenta and yellow will be raised slightly, but only in those areas where cyan is expected to come out too dark.

The printed color will be darker than the offset target, but it will have the same level of saturation. FlexoFix will yield more natural colors on the Flexo press.

## Spell 4: Influence the black starting point

The most noticeable tonal jump is found in the black separation, especially when skeleton-black is used, the most commonly used black strategy. The trick to force a minimum dot for all image areas is undependable for black: the image would become gray all over.

FlexoFix inverts this logic and promotes the tonal jump to a feature!

Unlike the colored channels, the black channel will go all the way to 0%, generating tonal jumps. But by shortening the black a little further, FlexoFix can move tonal jumps deeper into the shadows, where they are less noticeable. Black is only used where it really contributes to sharpness and contrast.

## FlexoClean filter

The FlexoClean image filter automatically removes isolated spots from your separations. This results in cleaner printing plates. Spots are removed based on size and color.

Small holes in the plates can be automatically filled with minimum dots.

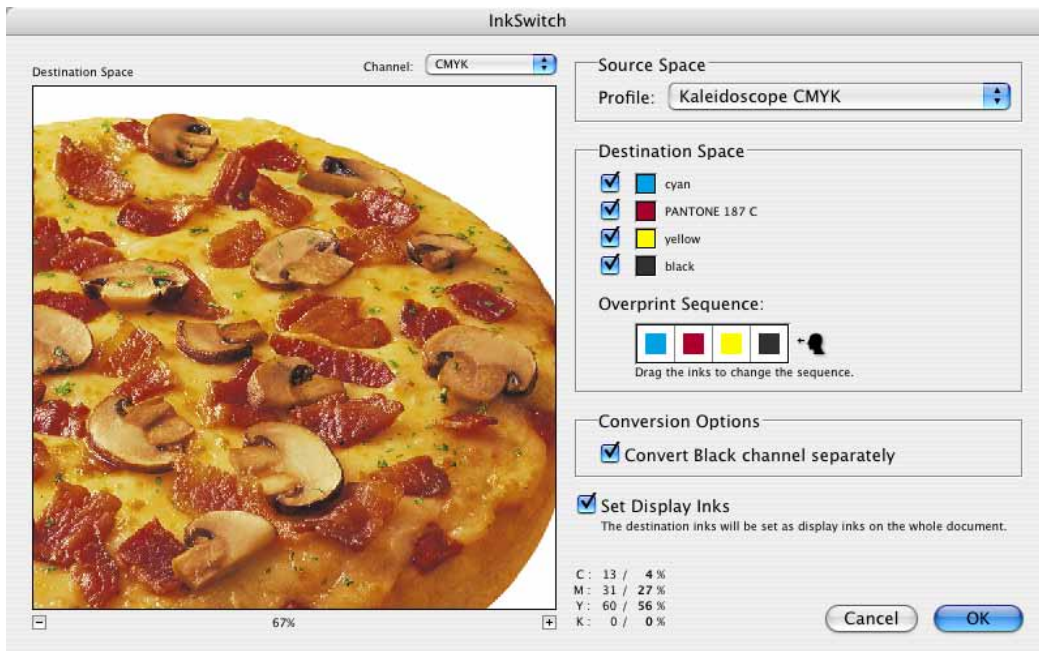
# Ink Tools for Adobe® Photoshop® (PC/Mac)

*Packaging printers often use special ink sets (different from the standard cyan, magenta, yellow and black process inks) to eliminate the risk of critical color fluctuations on long print runs. To keep the total number of printing inks low, continuous tone images typically delivered in CMYK format must be re-separated for these non-standard ink sets. The accurate screen display of printed spot mixtures uses patented Esko Technology.*

## InkSwitch for special ink set separations

The InkSwitch module analyzes the full color gamut of such images and calculates a new optimal set of separations matching the original colors. Based on Esko's color management experience these operations can be performed quite precisely even without making comprehensive press fingerprinting tests. The effect of changing printing inks can be viewed immediately on screen, before or after separation changes.

Spot color tools for Adobe® Photoshop® revolutionizes the separation and editing of multi channel files. CMYK scans are easily post-separated into any desired set of colors. You work on the full image, instead of the impossible task of individually modifying separations. Mix a new color from any ink in the job, or clone existing color mixtures, and then paint straight into the full color preview. Put the spot color objects in different layers for maximum flexibility and creativity. Each separation is automatically adjusted, including knockout while you view the result that will be printed.



## Spot color tools for Adobe® Photoshop® benefits

- Huge time savings for creating spot color separations
- Less press fingerprinting due to built-in Esko-Graphics' patented ink profiling technology
- Layer support to maintain full editability during the dynamic versioning cycle.
- InkSwitch reduces ink cost
- InkSwitch reduces the number of printing units, resulting in time and production cost savings
- Better quality using spot colors
  - Better color balance
  - Better ink density control
  - Better dot gain control