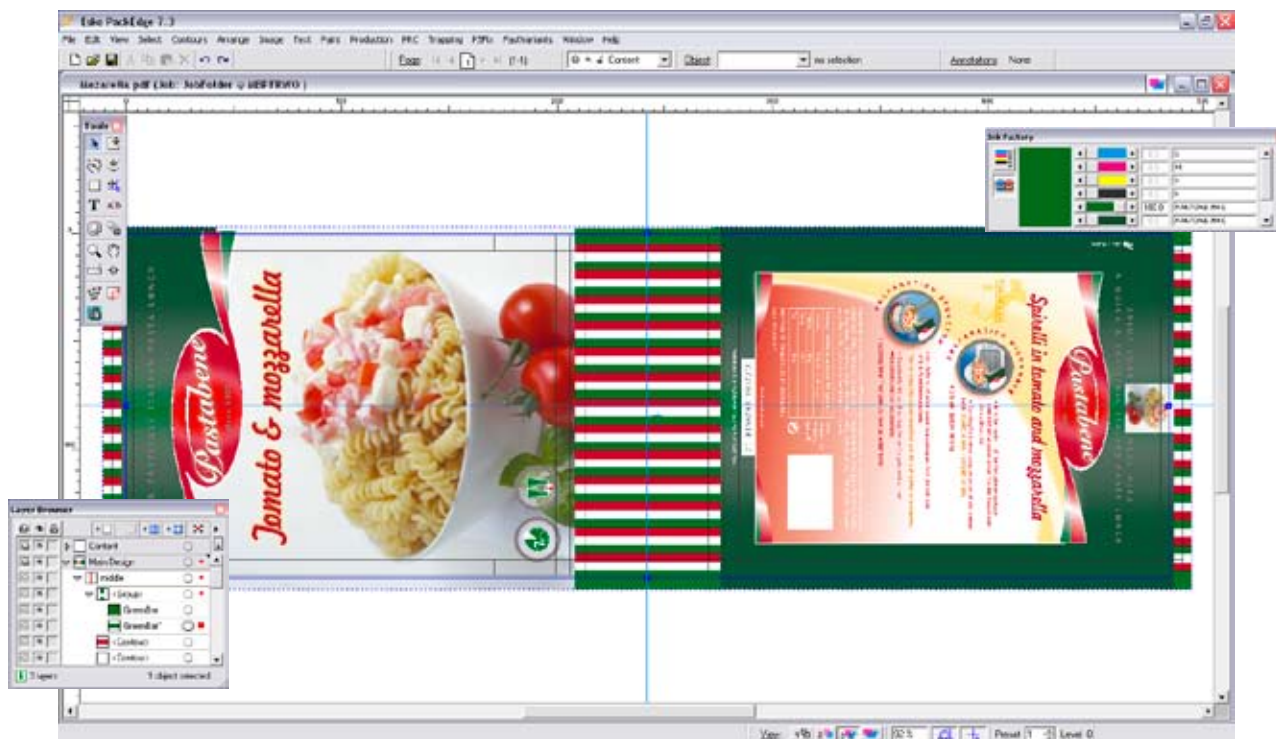


# Packaging pre-production editor for Microsoft Windows®



**PackEdge** is EskoArtwork's high performance packaging pre-production editor running on Microsoft® Windows®. It offers dedicated tools for pre-flighting, editing, trapping, and color accurate viewing of overprints and transparencies.

PackEdge dramatically reduces the time spent on the pre-production of packaging and labels. The application is easy to learn and easy to use. PackEdge is scalable and enables an unparalleled level of productivity and quality.



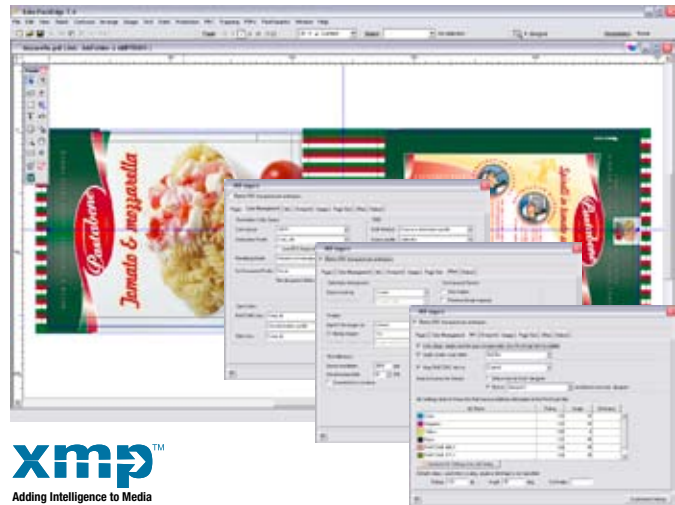
The PackEdge editor offers dedicated packaging prepress tools.

## Design import

Open any file and maintain very high levels of editability with the CertIn® **all-in-one input and normalizing tool**. PackEdge reads and transfers any PDF, PS, and EPS/DCS file into print workspace, using Adobe® PDF libraries: unique in the industry. Document structure such as pages, layers, groups and compounds as well as object properties like fills, strokes, transparencies, blend-modes remain editable.

PackEdge offers native support for all major image file formats including PhotoShop®, TIFF, OPI...

PackEdge offers the choice of embedding all raster data or external references for shorter turn-around and retouching. You can distill any PDF file to any PDF flavor for any purpose to simplify your infrastructure and reduce the number of files in your workflow. All normalized files are enriched with production critical metadata.



*PackEdge ensures printability during file import eliminating issues during output.*



## Preflighting printability

In order to deliver designs in compliance with the limitations of the targeted printing process, PackEdge's standard **Print Rule Checker verifies design compliance with specific characteristics or limitations**: you avoid expensive press stops. An **auto-correction feature** assists the operator to fix a range of violations with a single mouse-click, eliminating the need of editing each individual object property.

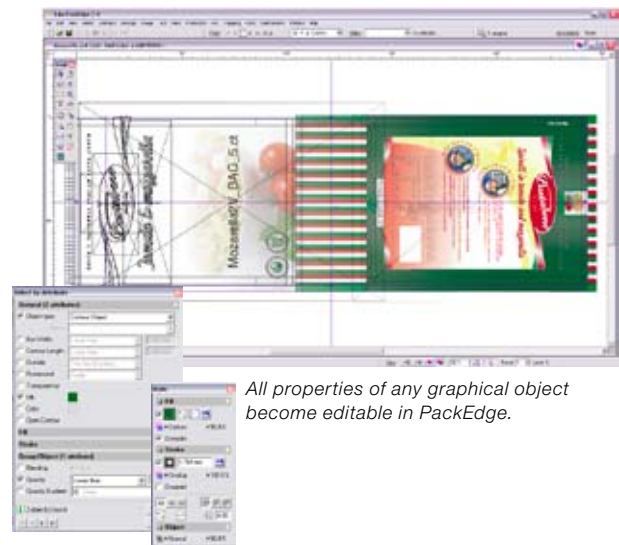
*Numerous critical parameters can be checked for all printing processes.*

## Editing

All objects – line art, live text or images – can be checked for shape, color, screening, transparency, blend mode and its relation in the file structure (compounds, groups and layers). And all these parameters are editable and can easily be changed.

PackEdge allows text changes in its built-in text environment, even text that was split up due to the PostScript or PDF language can be reflowed.

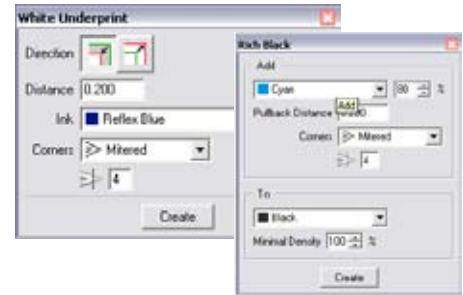
All kinds of vignettes can be defined and images can be placed and changed. Many image formats are supported: TIFF, EPS, DCS, PDF... All file elements, even images, can use special inks and are not restricted to 4 colors or CMYK as PackEdge's editing is completely built around deviceN (N separations). PackEdge creates many industry standard bar codes and incorporates all necessary checks for optical readability. Advanced clean-up and editing tools allow detailed analyzing and quick processing of even the most complex packaging designs.



*All properties of any graphical object become editable in PackEdge.*

# PowerTrapper

Next to dedicated manual trapping tools, PackEdge's has optional Automatic Trapping module. PackEdge traps complex designs in a matter of minutes. All calculated trap objects end up in a new separate layer combined with the ability to edit and modify the trap objects.

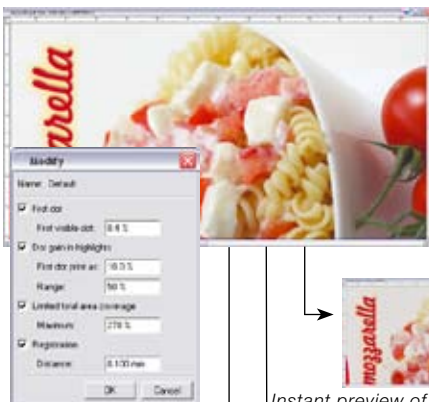


High productive tools such as a generator for white plates and rich black boost production efficiency.

# DesignWizard



The **DesignWizard** module creates different flavors or versions of one file. By consulting a XML file PackEdge replaces images, backgrounds, text and even barcodes and make each set available as individual asset. Generating numerous similar tags, extending products or processing changes becomes a one-click operation. DesignWizard is also available as a fully automated BackStage task.



# High resolution separation viewing

**viewX** offers high resolution separation viewing, as if you were inspecting your final printing plates. A set of smart view modes assist the operator to focus on critical areas and apply the necessary corrections.

**viewX** offers Separation preview, Color preview, TAC (Total Area Coverage) preview, Flexo Plate preview, Flexo Print preview and Registration Error preview as well as a precise digital densitometer.

**It allows verifying the printed result even before expensive proofs or plates are made.**

The Registration Error preview simulates the press miss-registration per separation, allowing the operator to check for instance if the applied trapping distance covers the press miss-registration tolerance to avoid gaps.

Instant preview of the printed result.

viewX showing isolated dots and lost hi-lights.

Simulating mis-registration discovers smallest trapping issues.

# CAD-Graphic Integration



Structural and graphic professionals need to communicate without conversion barriers.

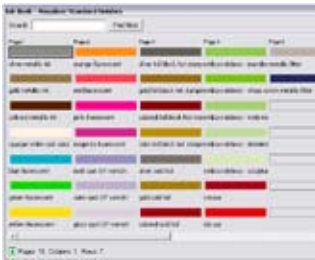
**PackEdge** imports the industry's most important native CAD file format ArtiosCAD and common formats such as CFF2, DXF and DDES.

## Enrich structural design

Adding cutouts following graphic elements is an appealing effect in packaging design. The CAD export functionality of PackEdge lets you add cut and creases to existing ArtiosCAD designs for a perfect match between print and converting.

Sample: Generation of a cutout window based on contours of the graphical design.

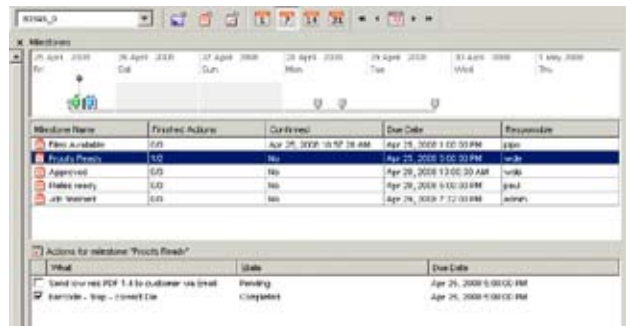
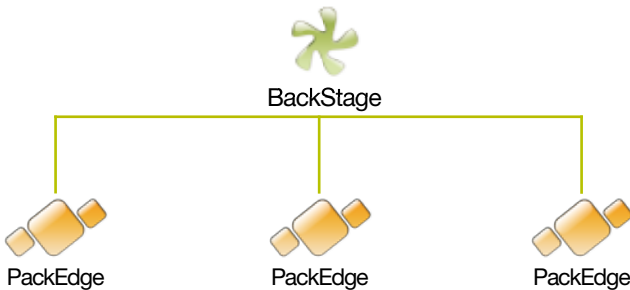
# Visualizer Ink Book



Visualizer Ink Swatches let you define a huge variety of special inks, finishes, varnishes and embossing. Together with the linked structural data (ARD or BAG) you can now export to Visualizer - quick and easy.

Choose ultra-realistic finishes, special inks... from the Visualizer Ink Book.

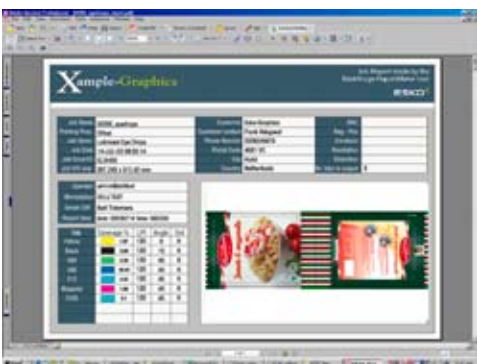
# Workflow Integration



**PackEdge** is highly integrated with EskoArtwork's **BackStage** workflow server. No matter if you want to outsource and automate processor-intensive processes such as import, export, cleanup or trapping. BackStage and PackEdge form the ideal client-server relationship - unbeaten in the packaging industry.

A searchable job database, milestone and operator to-do-lists assist you in managing day-to-day workload challenges. Highly productive automated tasks such as the **Design Wizard, Report Maker-task or automated Step And Repeat** significantly increase your production efficiency.

JDF and JMF enable BackStage to interact with your order entry system - developed to reduce cost and waste and to optimize lead time.



## SmartMarks

PackEdge comes with a highly intelligent and flexible set of tools for generating registration marks. These SmartMarks automate the complex and time consuming task of adding color bars, bearer bars, registration crosses, job-info...

The marks are dynamic and snap to the design size and automatically use the inks from the job, so the user never has to spend time coloring and positioning manually.

Ink Panel							
*	*	Dot	Inkname	Angle	Lpi	Inkcoverage %	Inkcoverage in mm
1			Cyan	22.5	120	19.04	4095.0
2			Magenta	52.5	120	16.63	3577.0
3			Yellow	7.5	120	17.35	3732.0
4			Black	82.5	120	4.89	1051.0
5			PANTONE Purple C	45	120		
6			PANTONE 350 C	45	120	33.18	7134.0
7			PANTONE 356 C				
8			PANTONE 877 U				

Filename	4Cheeses_Label_Final
File Width size	168 x 128 mm
Report made on	5-MAY-08 16:13:17
File last saved	05-MAY-08 15:56:55
Job name	Master_8010_Pastabene
Order ID	290608_08
Sub-Order ID	
Job Category	Label Flexible
Barcode type	EAN 13
Barcode	2567845698596
Barcode BWR	0.
Job URL	file://home/.../workflow_container/Master_8010_Pastabene
File SmartID	f1p2q1
Description	4 Flavours of Pastabene Labels
External Files	file://4Cheeses_Label_Final_2.ct

*SmartNames collecting production critical job information used on job reports and print-outs.*

## SmartNames

Metadata such as ink names, screening parameters, job version or even ink coverage can be used in combination with SmartMarks to reliably visualize production critical information on screen, print-outs or plates.

## Export

Distill to any kind of format: Supports PDF 1.3- PDF 1.7, EPS, DCS, PS 1/2/3 and Adobe® Illustrator® optimized PDF.

Share print production critical information such as CIP3/PPF. Our **OutRight®** feature ensures metadata, transparencies, overprints, traps, vignettes are rendered correctly.

## Highlights



### Based on PDF

Make the world's most famous portable document format your production asset.



Studio

### CAD-Graphics integration

PackEdge incorporates all major structural design file formats: ArtiosCAD, CFF2, DXF and DDES. Integration of EskoArtwork's brand-new revolutionary flexible structure assets made with Studio.



Visualizer

### Ready for virtual mock-up

PackEdge lets you define a huge variety of special inks, finishes, varnishes and emboss. Together with the linked structural data ARD or BAG, you can now export to EskoArtwork Visualizer – quick and easy.

## Key benefits

- High productivity
- Runs on standard PC hardware
- All the tools you need for pre-flighting, editing, trapping, distortion, screening, barcodes and more
- Produce 'press-ready' designs in a fraction of the time needed by other DTP programs
- Adobe Certified: unique in the industry
- Edit in real time
- Our 'true view' preview lets you see immediately see the results of your work
- Seamless integration with industry leader ArtiosCAD and other CAD software such as CFF2, DXF and DDES
- Work natively with PDF
- Real deviceN color space (up to 64 separations)
- High internal accuracy with ultra deep zoom
- Easy to learn and customizable for expert use
- PackEdge links very well together with **Plato**, a dedicated tool for automatically stepping labels and folding cartons based on user defined templates.



Plato