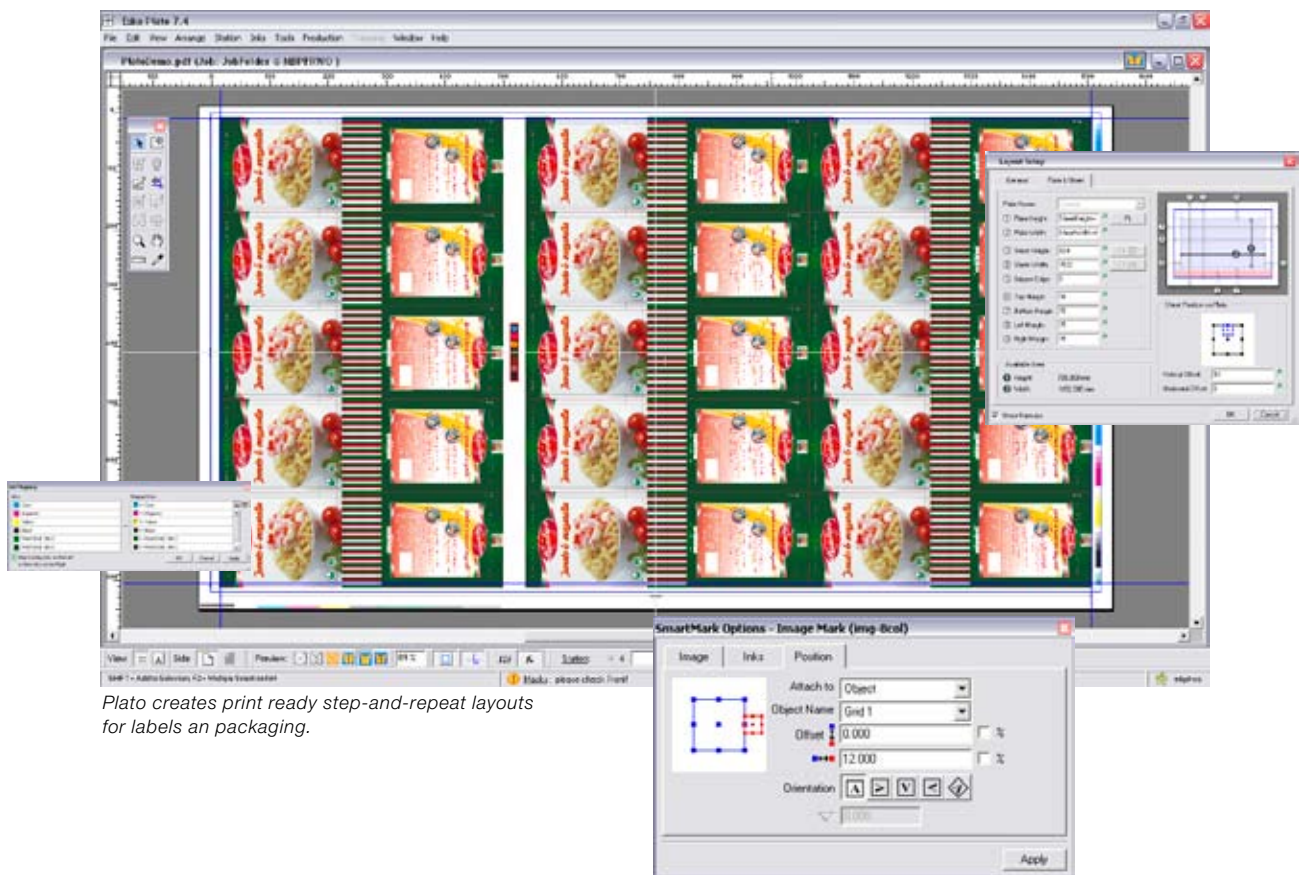


Step-and-repeat editor for Microsoft® Windows®

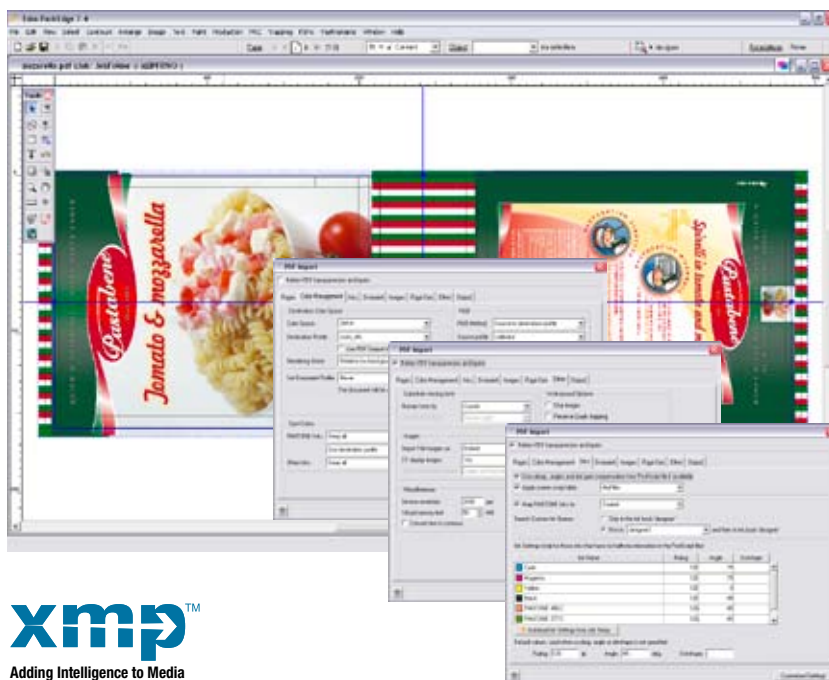


Plato is high performance step-and-repeat software running on Microsoft Windows. Plato is dedicated to the creation of print-ready layouts for the packaging and label industries. Plato offers on board trapping, and color accurate viewing of overprints and transparencies. Working with Adobe® PDF and supporting formulae-based templates, Plato boosts production capacities and reduces possible errors and waste.



Design import

With Adobe® PostScript and PDF libraries on board, **Plato imports data coming from any design application. Plato also exports to any CtF, CtP or proofing system in your configuration.** Plato works natively with PDF 1.7, including support for transparency, spot colors and Open Type fonts. Document structure such as pages and layers remain usable. Plato also features an intuitive user interface, and seamlessly interchanges Adobe® XMP job metadata with Adobe® Creative Suite® applications. Production critical job data can be extracted from XMP data, without the need to open the PDF file. Layer support provides immediate feedback about die-cuts, trapping layers, SmartMarks, barcodes and inks with their properties.



xmp™
Adding Intelligence to Media

Any DTP data is converted to a print-ready production asset.

Import structural designs



Automated layout based on MFG or CFF2 manufacturing files.

Flawless automated plate layout is ensured with Plato's clever CAD import. Plato reads CFF, DDES, and **native ArtiosCAD design and manufacturing file formats.**

All information is accepted, including step-and-repeat parameters, sheet and board sizes, and varnish areas.

Die-based masking for graphics

To define non-printing areas and to mask out unwanted areas of the graphic design, Plato's automatic masking tools allow the user to exclude specific panels from a mask and to create a mask from a 1-up die outline.



Plato's Intuitive feedback on interfering flaps.

Plate-based mask adjustment

SmartFlaps™ allow you to adjust overlapping graphic masks intelligently on the plate. It suggests the best masking, which can be fine-tuned by the user.

Once a decision is made, it is applied to all similar mask occurrences over the entire plate.

PowerTrapper

Plato offers unsurpassed trapping for jobs that come straight from the design department. This optional trapping module offers accuracy and speed. The ticket approach eliminates all post-trapping repair and exception editing. This is also reduced by unique functions such as Gap Detection. Advanced rule sets can be built, saved and re-used. All traps are added on a separate editable layer.



High resolution separation viewing

With viewX, Plato offers high resolution separation viewing, as if you were inspecting your final printing plates. A set of smart view modes assist the operator to focus on critical areas and apply the necessary corrections. viewX offers Separation preview, Color preview, TAC (Total Area Coverage) preview, Flexo Plate preview, Flexo Print preview and Registration Error preview as well as a precise digital densitometer.

viewX allows verifying the printed result even before expensive proofs or plates are made.



The Registration Error preview simulates the press miss-registration per separation. This allows the operator to check, for example, whether the applied trapping distance covers the press miss-registration tolerance to avoid gaps.



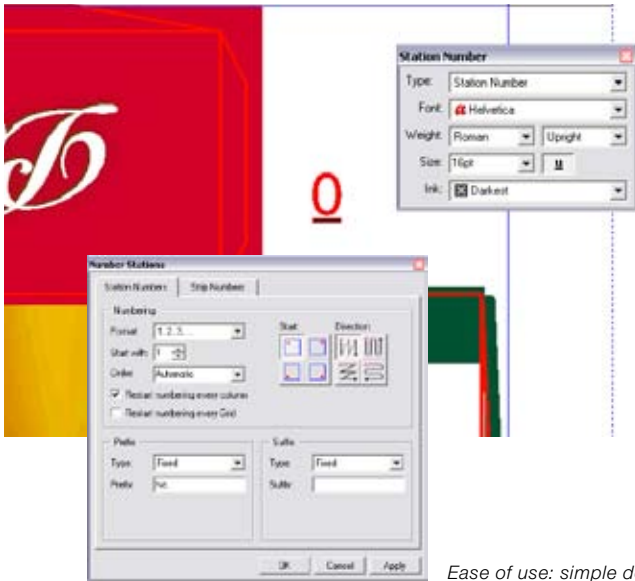
Instant preview of the printed result.



viewX showing isolated dots and lost hi-lights.



Simulating mis-registration discovers smallest trapping issues.

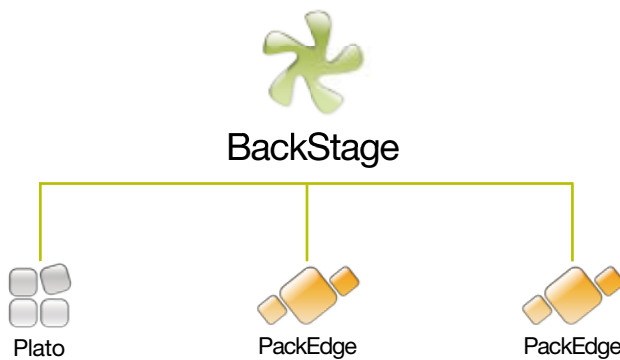


Ease of use: simple definition of numbering placeholders.

Station and waste numbering

Plato inserts a placeholder for the Station Number (the position on the sheet). The placeholder specifies attributes such as position, font, size and the ink(s) in which the number is to be printed. The operator can choose from 16 predefined numeral schemes, or interactively specify the order.

Workflow integration



Plato is highly integrated with EskoArtwork's **BackStage** workflow server. You want to automate processor-intensive processes such as import, export, cleanup or trapping? BackStage and Plato form the ideal client-server relationship - unbeaten in the packaging industry.

A searchable job database, milestone and operator to-do-lists assist you in managing day-to-day workload challenges. Highly productive automated tasks such as the **Design Wizard, Report Maker-task or automated Step and Repeat** significantly increase your production efficiency.

JDF and JMF enable BackStage to interact with your order entry system - developed to reduce cost and waste and to optimize lead time.

Plato links very well with **PackEdge**, EskoArtwork's high performance packaging pre-production editor running on Microsoft® Windows®.

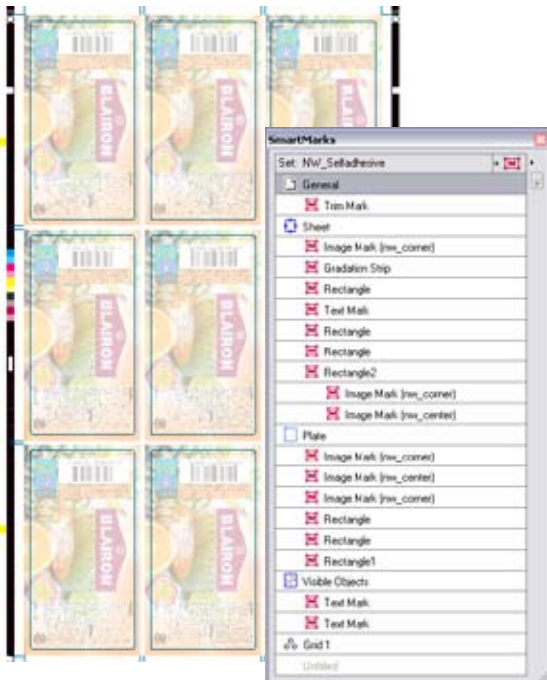
Export

Export to PDF 1.3 - PDF 1.7, EPS, DCS, PS 1/2/3 and Adobe® Illustrator- optimized PDF. Share print production critical information such as CIP3/PPF, render your job to a simple JPEG or multichannel image. Plato's OutRight® feature ensures that metadata, transparencies, overprints, traps, vignettes are rendered correctly.

Back layout creation

A growing number of packages and labels are printed on both the outside and inside. Only Plato SmartFlips creates the layout of the back, with precise back to front alignment. SmartFlips keeps front and back side in sync dynamically.

Automatic creation of print production controls



Each SmartMark increases the level of automation and error reduction.

SmartMarks

Plato comes with a highly intelligent and flexible set of tools for generating registration marks. These SmartMarks automate the complex and time consuming task of adding color bars, bearer bars, registration crosses, job-info... The marks are dynamic and follow the plate-, sheet- or grid dimensions based on formulae. They automatically use the inks from the job, so the user never has to spend time coloring and positioning manually.

SmartNames

Metadata such as ink names, screening parameters, job version or even ink coverage can be used in combination with SmartMarks and to reliably visualize production critical information on screen, print-outs or plates.

Automated folding carton workflow

Be **right the first time - always**. Plato's **PowerStepper** module recognizes all cut, crease, fold and bleed information when a CAD file is opened in Plato. All position and rotation angles are defined ready to automatically nest the graphic file. The graphics are then locked to die to prevent unwanted changes.

The usage of available layout information of the die manufacturing file guarantees perfect match of cut and print. **Be right the first time - always.**

Optimized label layouts, designed at minimal cost

The **PowerOptimizer** module designs label layouts that fill job orders at a minimum cost. The sheet layout will be the "best" layout: one that minimizes waste and overruns. SmartLayout provides feedback about suggested layouts based on the desired run length of a given label, the maximum waste on the total sheet and the maximum allowed overrun per label.

Highlights

Formulae-based parametric templates minimize the amount of required templates.

SmartFlips

Dynamic Recto-Verso synchronization ensures perfect front and backside match.

Screen Registration

This is the ultimate support for delicate reproduction work. Each one-up screened in exactly the same way - every single dot.

PowerTrapper Module

Trap your files the moment you have your printing schedule.

Export to JDF

Support for JDF export out of Plato improves the connection of your plate-room operation to your business process, based on industry standard workflow automation concepts.



QuickStep compatibility

For QuickStep users, Plato is an easy and logical next step in the upgrade path as it is fully compatible with GRQ files. The repetition formulae from QuickStep can be further edited with Plato's Grid Based tools.

CAD-Graphics integration

Plato incorporates all major structural design file formats: ArtiosCAD, CFF2, DXF, DDES2 and DDES-3.



Extensive set of tools

Support for staggers, head turns, dynamic grids and nesting tools.

Intuitive graphical user interface

Plato is easy to learn and optimized for experienced professionals.

Key benefits

- Plato provides a robust set of **automatic and interactive tools** to create even the most complex step-and-repeat arrangements. Plato comes with Adobe®'s PostScript and PDF libraries to import jobs from any source. An **on-board trapping** module adds flexibility and independency to your plate-room production.
- The **export to PostScript and PDF** functionality guarantees flawless export to any film or CtP output device in the market.
- Users who benefit most include **narrow web label printers, flexible packaging converters and folding carton offset printers**. In each of these production environments, Plato adds control and reduces cost by bringing optimum plate layout in-house. For **packaging trade shops** that supply final plates or film as their core competencies, Plato brings extreme flexibility and quality to the workflow.