



**i1 COLOR MANAGEMENT SOLUTIONS
FOR THE MOST DEMANDING COLOR PERFECTIONIST**

The professional's choice for exceptional camera, display, projector
and printer calibration and profiling.

PERFECTLY. AMAZING.

Color Perfectionists know that a calibrated and profiled workflow is a critical element in a successful and efficient creative workflow. What you capture on your camera, see on your monitor (or projector) or view on your print has to match or you will never be happy with the result no matter how much time you devote to perfecting it. i1 provides the highest level of color accuracy in the industry with unrivaled speed, accuracy and flexibility. From software to hardware, i1 provides Color Perfectionists with the perfect balance of speed, options and controls to fit your individual workflow.

In our world, perfection is not too much to ask for. i1 solutions deliver!

FUNCTION ICONS

X-Rite solutions are clearly marked with function icons so you can quickly identify the functionality included in each solution.



Monitor Profiling



CMYK Printer Profiling



Camera Profiling



Monitor QC



Printer QC



Projector Profiling



RGB Printer Profiling



PANTONE Color Manager

i1 | BASIC PRO



includes:

- i1Pro spectrophotometer
- i1Profiler software: monitor profiling, monitor and printer quality control
- PANTONE® Color Manager software

PROFESSIONAL COLOR MANAGEMENT

i1Basic Pro is an affordable, professional spectral color measurement solution which offers monitor profiling, monitor and printing quality verification, and spot color measurement. i1Basic Pro is easy to use, and includes everything you need to create professional, custom ICC monitor profiles.



i1 | PUBLISH PRO



includes:

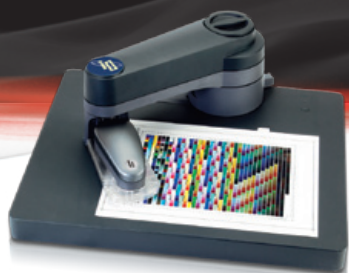
- i1Pro spectrophotometer
- i1Profiler software: monitor, digital projector, RGB, CMYK, CMYK+4 printer profiling; monitor and printer quality control
- PANTONE® Color Manager software
- ColorChecker Camera Profiling software
- ColorChecker Proof target
- Introductory ColorChecker Classic target [mini]

PROFESSIONAL COLOR MANAGEMENT FOR PREPRESS AND IMAGING PROFESSIONALS

i1Publish Pro is designed for imaging professionals working in prepress, digital printing, photography or design who rely on accurate color throughout their digital workflow – from cameras, monitors and projectors to RGB and CMYK+any4 printers and presses. Get the most color accurate displays, prints and proofs, with repeatable results every time.



i1|iO



includes:

- i1iO Automated Scan Table & Arm
- Replacement Glider Ring

VERSATILE. FAST. EASY.

Extend the power of your i1Pro with this automated hands-free test chart reading device. Simply plug in your device, align the test chart, and the scanning table does all the work. i1iO measures substrates up to 10mm thick including photo paper, fine art rag, cardstock, textile, even poly bag and ceramic!

i1 | PUBLISH



PROFESSIONAL COLOR MANAGEMENT SOFTWARE AND TARGETS

includes:

- i1Profiler software: monitor, digital projector, RGB, CMYK, CMYK+4 printer profiling; monitor and printer quality control
- PANTONE® Color Manager software
- ColorChecker Camera Profiling software
- ColorChecker Proof target
- Introductory ColorChecker Classic target [mini]

i1Publish is designed for photographers, designers and prepress professionals who rely on accurate color throughout their digital workflow. i1Publish includes the software and targets you need to get color accurate cameras, monitors, projectors, RGB and CMYK+ printers – with repeatable results every time. *(Measurement device not included.)*



STATE OF THE ART PROFILING TOOLS

i1 DISPLAY COLORIMETER

Professional Display Calibration

i1Display incorporates new technologically advanced filter and optical systems, amazingly fast measurement speed, and unrivaled color accuracy on all modern display technologies including LED & Wide Gamut LCDs. It's also spectrally calibrated, which makes it field upgradeable to support future display technologies.



i1PRO SPECTROPHOTOMETER

Award-winning i1Pro handheld spectrophotometer

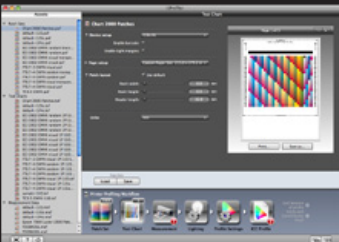
i1Pro has long been the de-facto industry standard when it comes to consistent, high quality color measurement. It offers super-fast measurements, great patch recognition, and versatility! It offers the versatility to profile monitors, projectors and printers as well as the ability to measure ambient light and spot colors; it is USB powered and is available in either NoFilter and UVcut versions.



i1PROFILER

Professional Color Management Software

i1Profiler software is the heart of i1 Professional solutions, delivering unprecedented high quality color results. It offers the unique flexibility to adapt to any imaging professional's workflow, offering complete power and control for a perfect color match. Users can choose between a 'basic', wizard-driven interface; or an 'advanced', user-driven interface to create high quality, precise, custom color profiles for monitors, projectors, printers, and presses.



PANTONE® COLOR MANAGER

Color Palette and Bridging Software

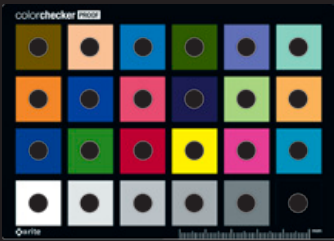
PANTONE Color Manager will dynamically keep all digital PANTONE libraries up to date, accurate and ready to use in Adobe® and Quark® creative applications. The tight integration of i1Profiler with PANTONE Color Manager swatch bridging software gives users seamless access to all PANTONE colors for precise spot color matching, and unparalleled accuracy of spot color reproduction. It also makes multiple color space selections simple for easy color translation to multiple applications and is ideal for imaging professionals working with brand color specifications.



COLORCHECKER PROOF

Visual Assessment Target

To help users perform a visual color evaluation of their results using a physical standard, i1Publish includes ColorChecker Proof, a 24-patch ColorChecker Classic target precut for direct viewing against a printed target. When used in proper lighting conditions, this offers a much more precise visual verification of output quality, so that the user can quickly determine if any adjustment is needed.



COLORCHECKER CAMERA CALIBRATION SYSTEM

Software and Target

With the introductory ColorChecker Classic mini target and ColorChecker Camera Calibration software you'll quickly and easily build custom camera profiles for Adobe® Imaging solutions. This advanced profiling technology, which has become widely adopted in Raw workflows, provides excellent results with just the small 24-patch ColorChecker Classic target. It produces custom camera profiles that work exceptionally well, even in unusual or artificial light sources. Whether shooting with just one camera or multiple cameras, photographers can easily establish an accurate color foundation and maintain control of their colors.

